



LEDTECH ELECTRONICS  
CORPORATION

2025 Investor Conference

*Ledtech* 6164

20

25

## Disclaimer

## Disclaimer

- Contents of this presentation are based on CPAcertified financial statements prepared in accordance with IFRS. The full content and data are subject to the financial statements.
- The presentation may contain statements regarding the future based on current expectations and are subject to known or unknown risks or uncertainties. Actual future results may differ significantly.
- Unless otherwise required by law, the Company is not obliged to update its future prospects in response to new information or future events.



*Ledtech*

# Agenda

## Agenda

I、Company Introduction

II、Operating Results

III、Future Prospects

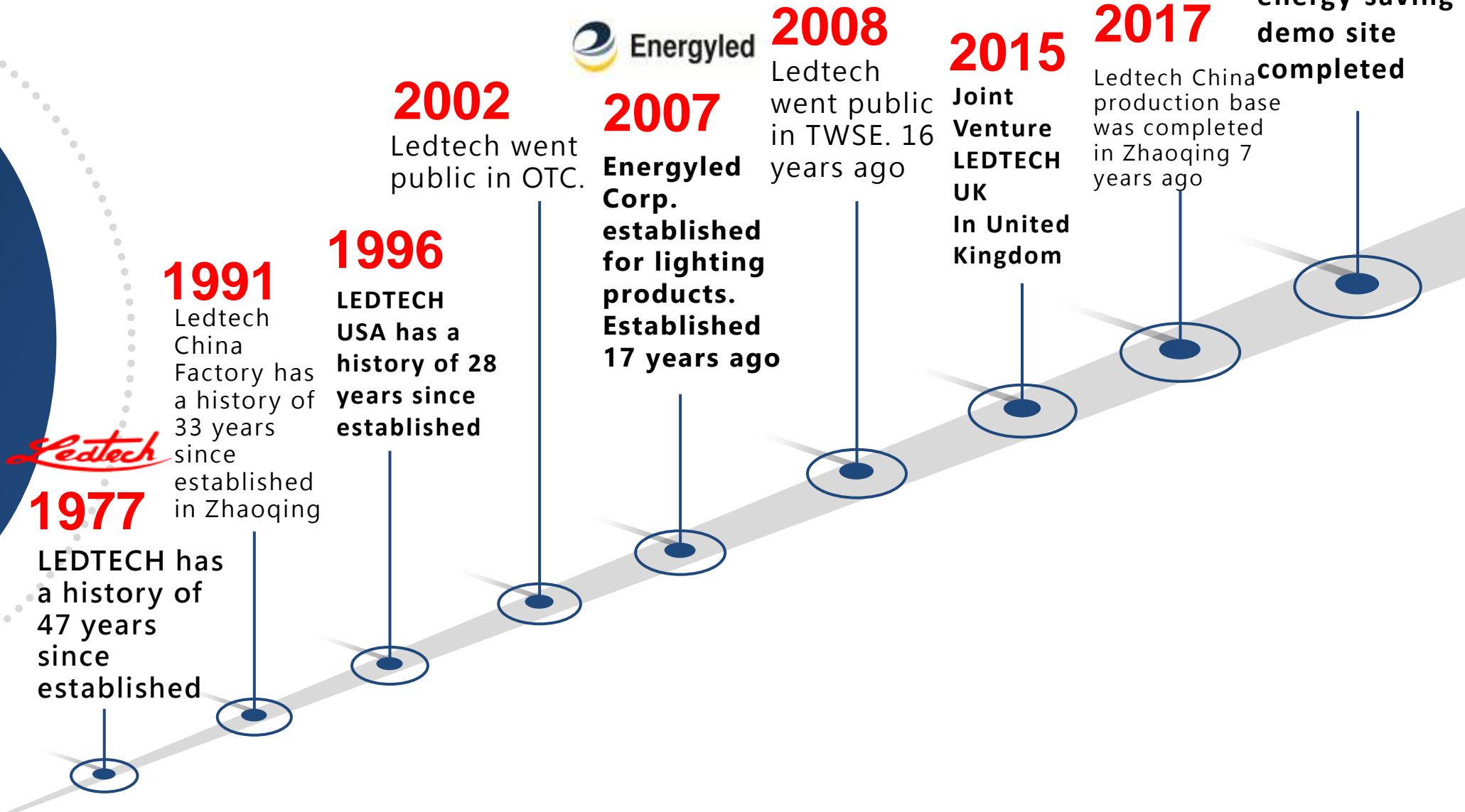
IV、ESG Lighting Product Introduction



*Ledtech*



# Milestones (updated to 2024)



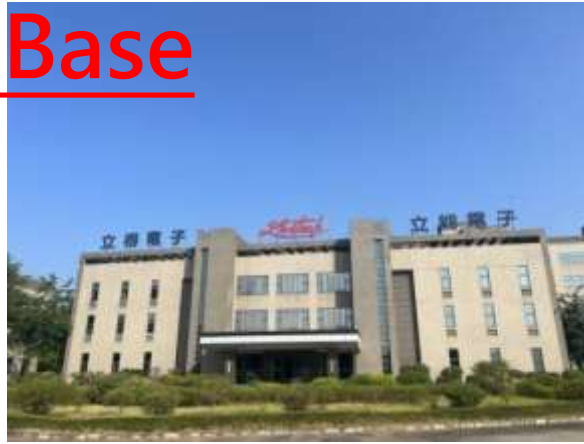
*Ledtech*

*Ledtech*

# Production Base



R&D Building II



Office and R&D Building



Factory

Cafeteria, Rec Room (75 acres of land)





## Business Philosophy

"We value customer experience and feedback and remain committed to delivering reliable support and satisfaction worldwide. Chairman Mr. Frank Liu states: "Through a hands-on, collaborative approach and a commitment to sharing the journey with our customers, we ensure they consistently experience our high-quality brand service."

## Ledtech DNA

Sincere ,  
Responsible ,  
Ever-Dedicated



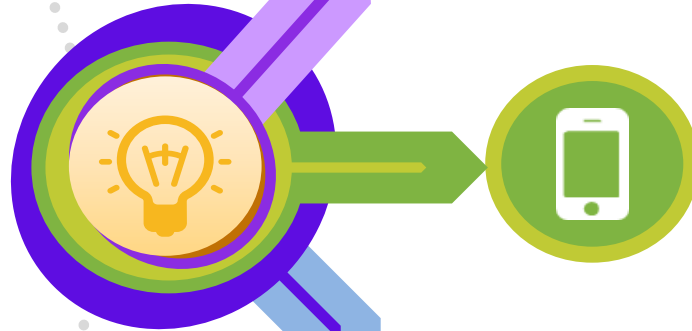
# Corporation Philosophy ✓

## Industrial Development

From LED indication to display and sensing applications, it promotes social and economic development and enables the human group as a whole to move towards a better future.



光



## ✓ AIOT

Connect various optical technology products with AIOT to create a new generation of human civilization in the future.



## ✓ Green Earth

Focus on energy saving and carbon reduction, product development and practical application, and implement the mission of sustainable environmental protection in enterprise operations.

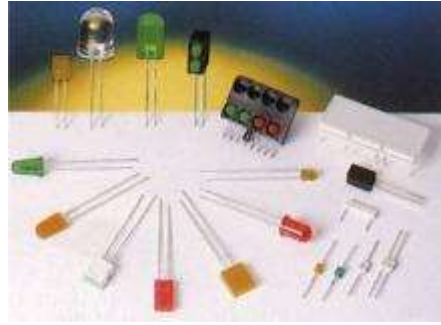


## **ESG sustainable development**

Pay attention to the sustainable development of Environmental, Social, Governance fields, and become a sustainable enterprise advocated by the international community.

# LEDTECH LED Components Series

**LED Lamp**



**SMD LED**



**High Power LED**



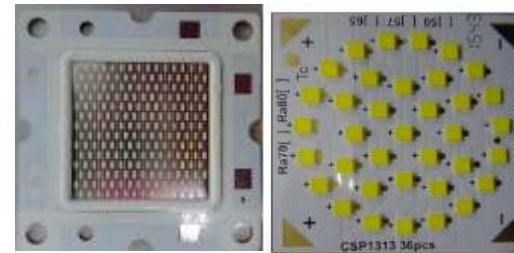
**LED Display**



**Chip On Board LED**



**COB NEW LED**

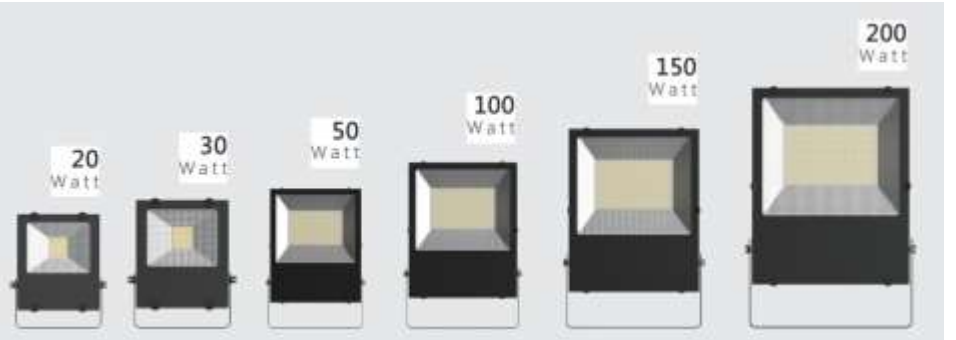


# Energyled LED lighting products



掩瓏燈 6吋  
ECLIPSE LIGHT 6"

Direct light / Indirect light  
Solar Eclipse Idea / 日全蝕光線概念



# Operating Results

## 3Q25YTD Results

### 3Q25YTD Results

*In NT thousand*

	3Q25		3Q24		YoY
	金額	%	金額	%	%
Net Sales	575,641	100.0	632,030	100.0	(9)
COGS	375,855	65.3	418,934	66.3	(10)
Gross Profit	199,786	34.7	213,096	33.7	(6)
Operating Expense	184,998	32.1	200,449	31.7	(8)
Operating Profit	14,788	2.6	12,647	2.0	17
Other Income/Expense	(1,912)	(0.3)	35,162	5.7	(105)
Profit Before Tax	12,876	2.3	47,809	7.7	(73)
Income Tax Expenses	(11,427)	(2.0)	(11,442)	(1.9)	0
Non-Controlling Interest	(365)	(0.1)	(195)	(0.1)	(87)
Profit Attributable to Parent	1,814	0.3	36,562	5.9	(95)
After Tax EPS	0.02		0.37		
Shares:(thousand shares)	80,000		97,518		

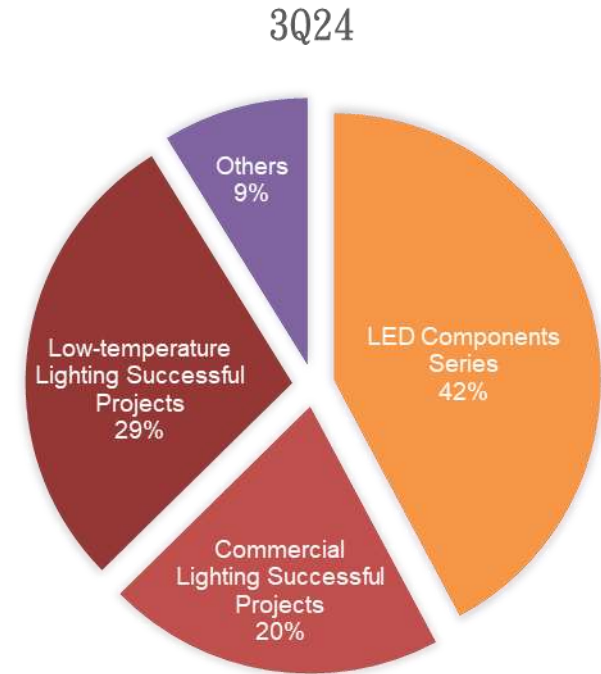
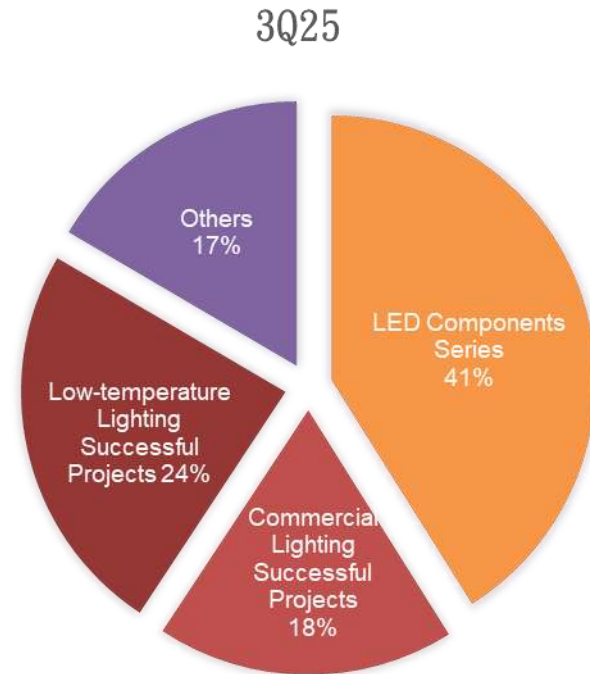
## Other Incomes/Other Expenses

### Other Incomes/Other Expenses

*In NT\$ thousand*

	3Q25	3Q25YTD
Net Interest	611	2,940
FX	11,821	(21,233)
Others	6,356	16,381
<b>Total OIOE</b>	<b>18,788</b>	<b>(1,912)</b>

# 3Q25YTD Revenue Contribution by Product



LED Components Series	LAMP 、CHIP LED 、 DISPLAY 、 HIGH POWER 、 BACKLIGHT 、 COB 、 SMD etc.
Commercial Lighting Successful Projects	Led Bulbs 、 Led Tubes 、 Panel Light 、 Spot Light 、 Flood Light 、 Flood Light 、 High/Low Bay Light 、 Street Light etc.
Low-temperature Lighting Successful Projects	Led Bulbs 、 Led Tubes etc.
Others	Raw materials and parts

## 3Q25TD Revenue by Product

<i>In NT thousand</i>	3Q25	3Q24	QoQ
LED Components Series	236,426	266,666	-11%
Commercial Lighting Successful Projects	104,877	129,199	-19%
Low-temperature Lighting Successful Projects	138,984	180,338	-23%
Others	95,354	55,827	71%

# Operating Results

## Balance Sheet

<i>In NT thousand</i>	3Q25		2Q25		3Q24	
	Amount	%	Amount	%	Amount	%
Cash & Equivalent	419,054	28	443,002	29	520,073	33
Accounts Receivable	166,040	11	229,065	15	147,264	9
Inventories	88,175	6	94,073	6	107,835	7
Current Assets	889,675	59	924,287	61	909,615	57
Total Assets	1,497,042	100	1,527,144	100	1,587,597	100
Short Term Debt	240,037	16	245,000	16	40,730	3
Accounts Payable	161,439	11	161,230	11	148,395	9
Current Liabilities	531,998	35	581,588	38	530,833	34
Long Term Debt	38,981	3	46,850	3	70,381	4
Total Liabilities	605,151	40	663,455	43	631,199	40
Equities	891,891	60	863,689	57	956,398	60

### Key Indices

Current Ratio (x)	1.67	1.59	1.71
Quick Ratio (x)	1.51	1.43	1.51

# 2026 Strategy of trend and focusing...

2026  
Towards to strategically  
expand with five major axes



## Product

Continuously to expand the revenue ratio of frozen equipment



## Focus

Focus on products, customers, and the market timing.



## Profit Growth

Select customers and products, concentrate resources, and enhance efficiency to improve profitability.



## IMAGE

Sustainability Report, Carbon Accounting, New Website Branding



## Strategy & Direction

ESG+IoT Total Solution Policy

2026  
Strategy by  
trend and  
focusing...



01 **Product**



Continuously to expand the revenue ratio of frozen equipment



**edenox**

VOX is a specialist brand that manufactures markets stainless steel products for distribution, dynamic preparation and refrigeration in the hotel industry, catering and associations of the ERA Group.

**asber**

ASBER is a global manufacturer of equipment for the hotel & catering sector, with a catalogue focused on quick-turn equipment with based on simplicity in their installation providing the best solution at a very competitive price.

**efficold**

EFFICOLD is the ONNERA Group's specialist brand in refrigeration. This brand is particularly aimed at



Somos  
GRUPO **Infrico**

**JORDAO**



# 2026 Strategy by trend and focusing...



## Product

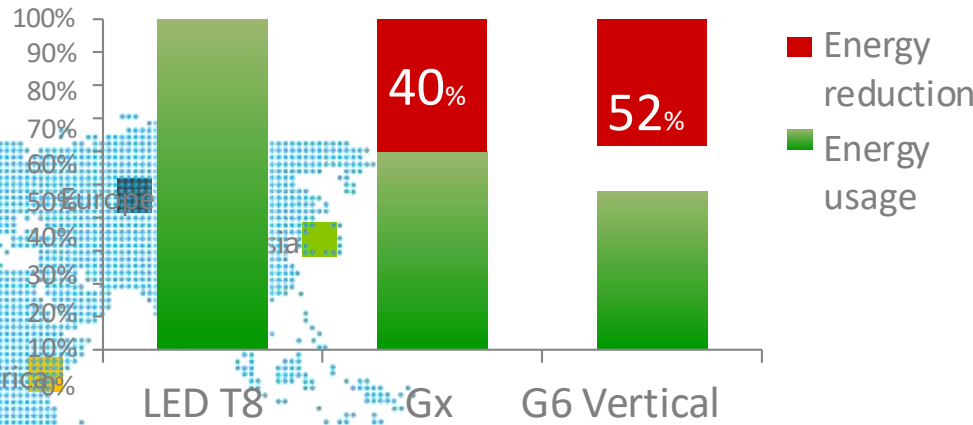
Continuously to expand the revenue ratio of frozen equipment



Lower energy cost

Uniform brightness

NO visible light source



Commercial Refrigeration manufactures



Spare parts services

Coca cola's spare parts providers in North America

# 2026 Strategy by trend and focusing...



## 02 Focus

Focus on products, customers, and the market timing.



## 03 Profit Growth

Select customers and products, concentrate resources, and enhance efficiency to improve profitability.

### ■ Food and beverage lighting

- Extending from the commercial refrigerator display lighting market to the application of the hot food display case, commercial signage, and commercial space lighting, to create a complete display and lighting solution covering the food and beverage retail channels.

### ■ LED component

- Base on the general lighting applications expanded to the full spectrum and special color light, meeting the high-requirement lighting needs of professional markets.

### ■ Lighting system

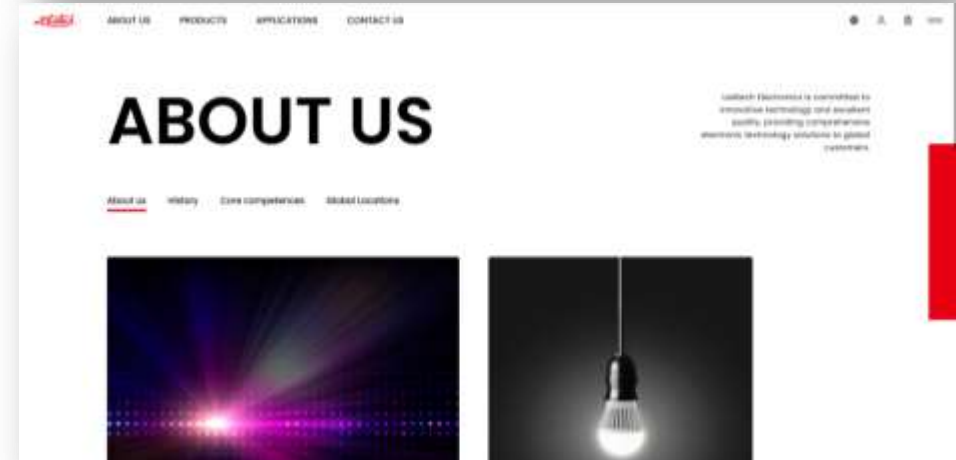
- Integrating the ESG controller, intelligent driver and high efficiency to contribute the health and smart lighting system.

# 2026 Strategy by trend and focusing...

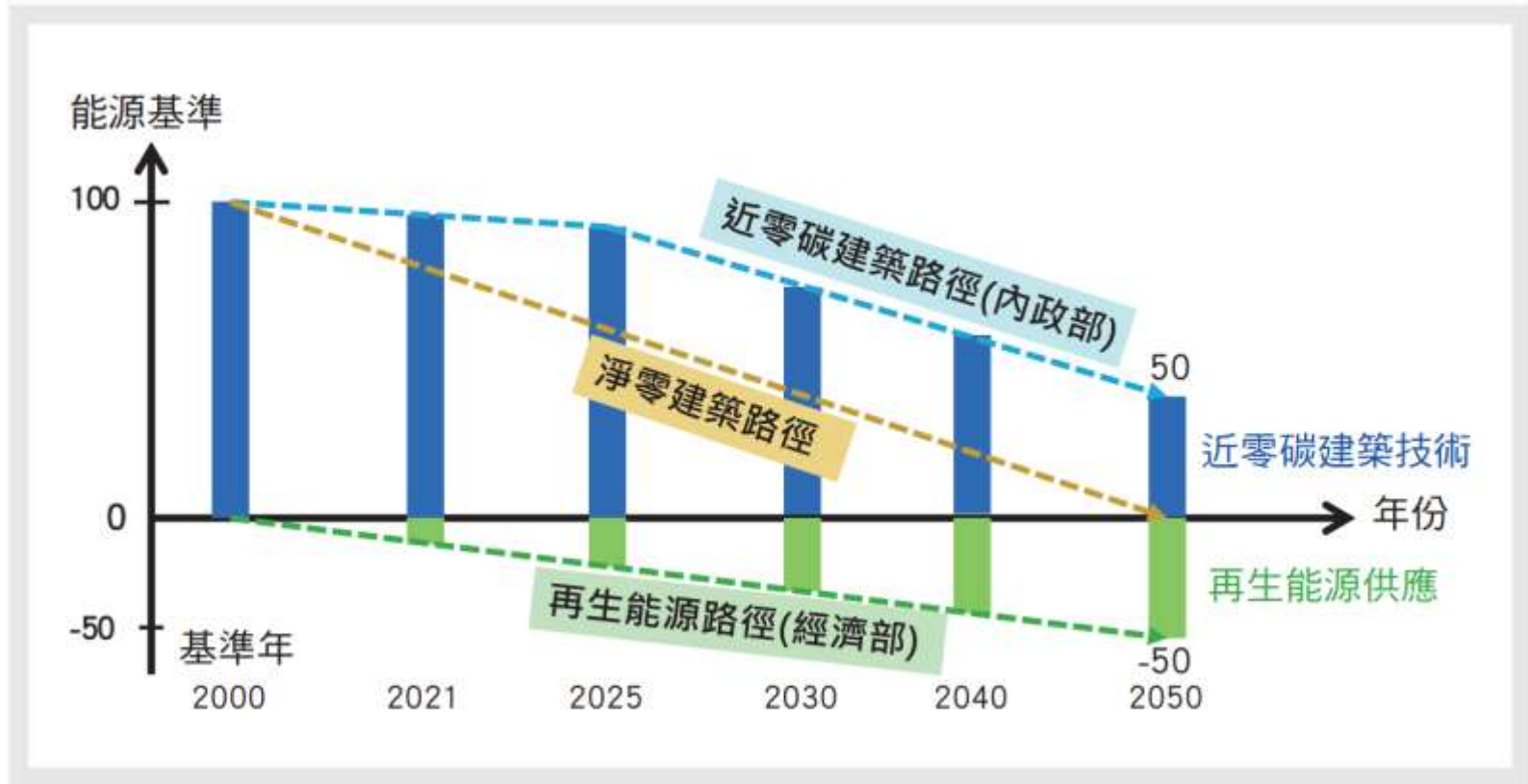


## IMAGE

Sustainability Report, Carbon Accounting, New Website Branding



# 2026 Strategy by trend and focusing...



## Strategy & Direction

CBAM+ESG+IoT Total Solution Policy



ESG

# LedTech

## ESG Lighting Total Solution



## ESG Requirements

### Clients:

- Supply chain must reduce carbon emissions yeas by years
- Vendor CSR assessment

### Financial Supervisory Commission:

- Financing targets must be related to ESG and carbon reduction

### Enterprise:

- Voluntary carbon reduction
- Good health and Well-being

### Government:

- Carbon Footprint Verification
- Corporate Sustainability Report (CSR)
- Taiwan Carbon Solution Exchange (2024)
- 3 Tiers Carbon Levy: NT300/100/50
- Building Energy-Efficiency Rating System (BERS)
  - ✧ Public building must comply with rating 1
  - ✧ Must comply with rating 1+ in Taipei
  - ✧ Rating 1+: Nearly Zero Carbon Building (50% energy saving)

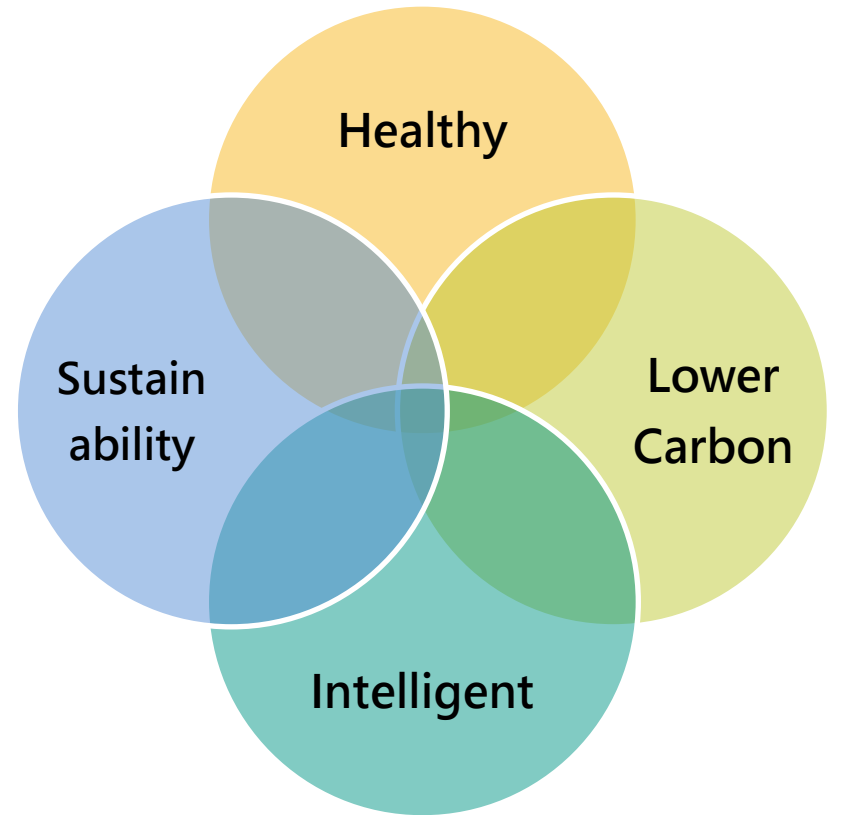
The era of Carbon Reduction

ESG

# ESG Lighting Total Solution

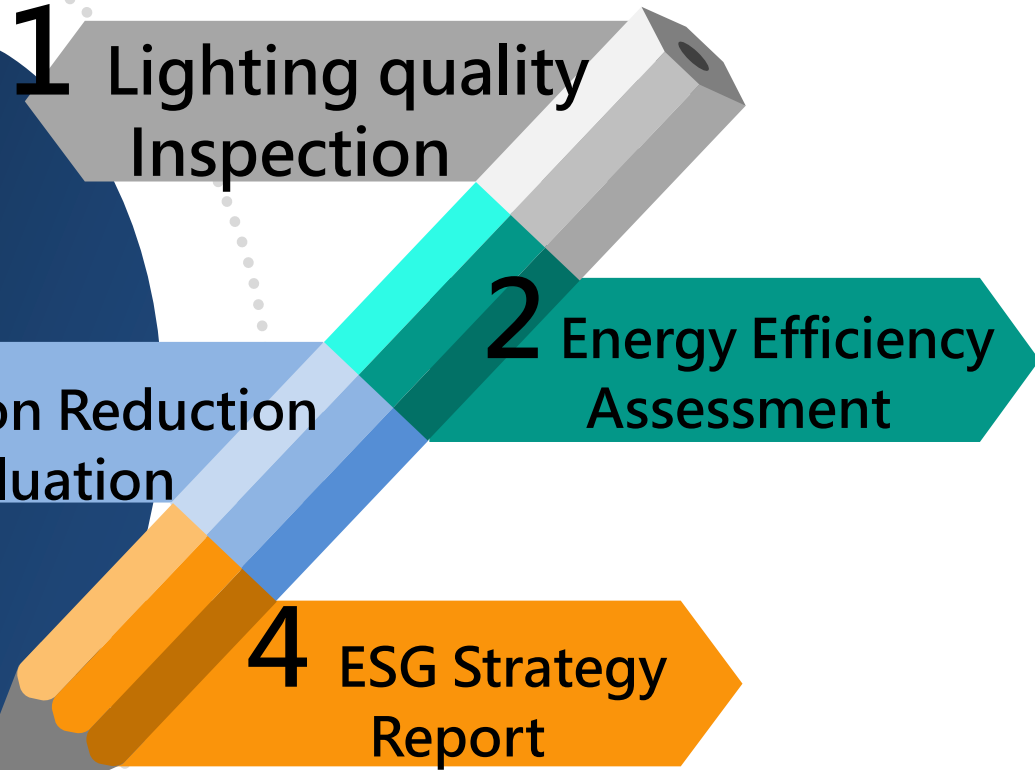


- Lighting Environment Inspection
- ESG Lighting Fixture
- Energy Management System
- High Efficacy Lighting Product
- ESCO service
- ESG Lighting Solution Proposal



Best ESG lighting solution partner  
for enterprise

# Indoor Light Inspection and Assessment



STEP 1

Lux/ CCT/ Glare Inspection



STEP 2

W/ LPD Calculation



STEP 3

Energy Saving Evaluation



STEP 4

Carbon Reduction Strategy

# ESG Lighting Fixtures



Low Temperature LED Tube 160 lm/W



Yellow LED Tube for Semiconductor Fab. 140 lm/W



Occupancy T8 Tube 140lm/W



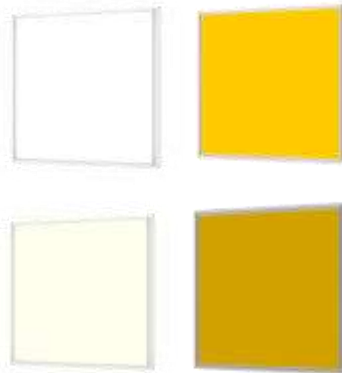
Batten Light 150lm/W



Recessed Light 130lm/W



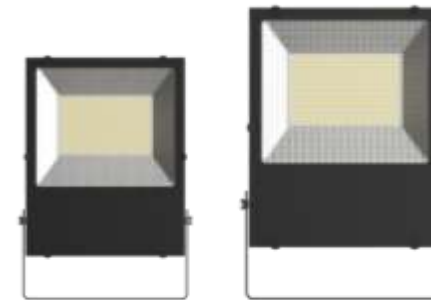
Troffer 160lm/W 16W/22W/25W



Low Glare / Human Centric Light



High Bay Light 160 lm/W



IP66 Flood Light 50/100/150/200W



Anti-Glare Recessed Light

# ESG Energy Management System

## 1. Energy Management System

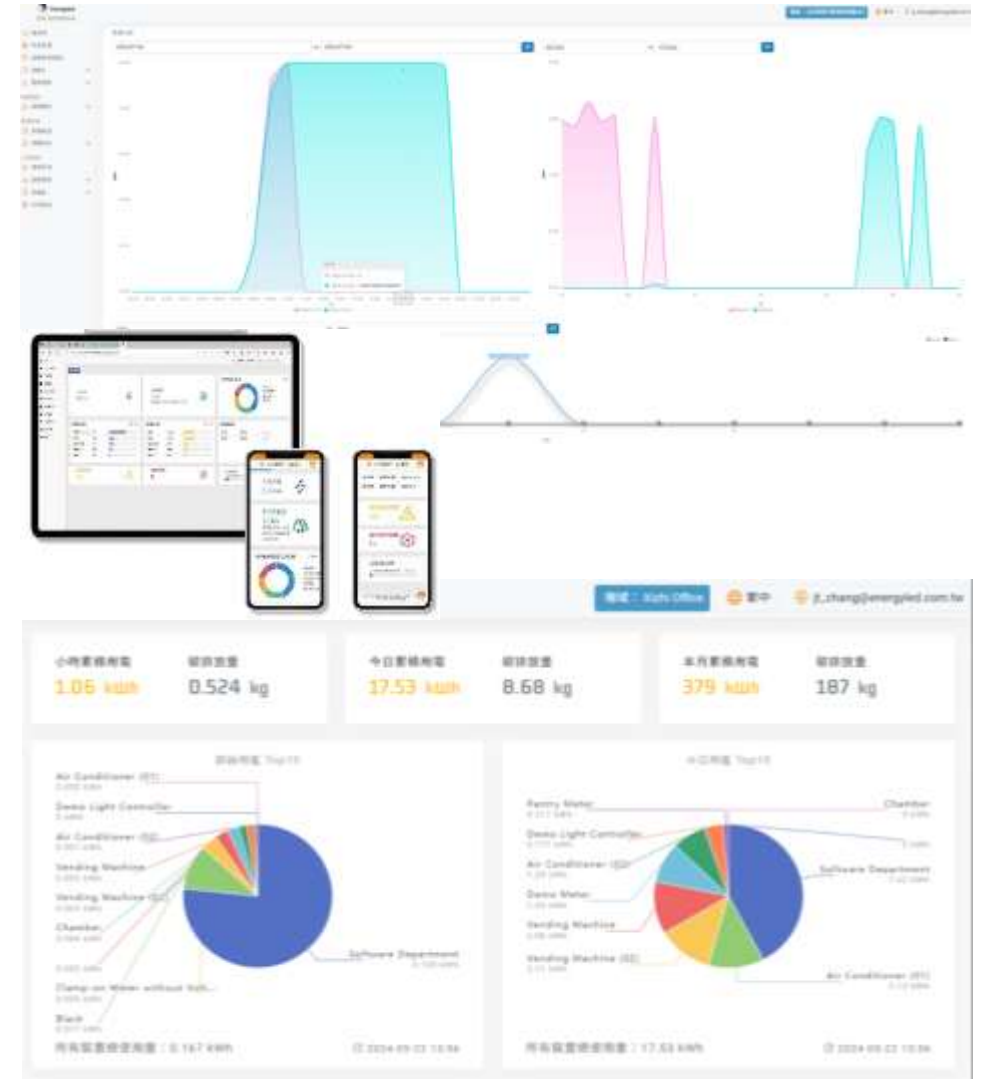
- Lighting fixtures real time monitoring of electricity and carbon emission.
- Real time or scheduled control by cell phone.

## 2. Abnormal Detection and Notification

- Notify personnel in charge by App.

## 3. Find High Carbon Emission Spot

- Planning carbon reduction strategy



# ESG supermarket (energy management system)



LED Sign Lights



Arcade Lighting



Indoor Lighting



Refrigeration Lighting



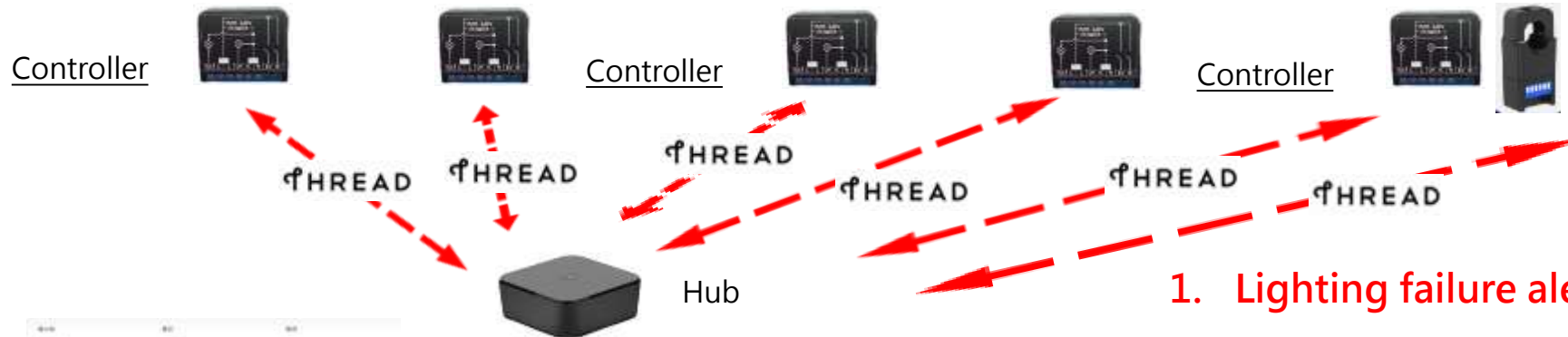
Commercial Freezer



Air Conditioning Power Consumption



Clamp Meter



ESG energy management System

- \*IoT control
- \*Scheduled On/Off

1. Lighting failure alert
2. Power abnormal alert
3. Temperature abnormal alert



App

# ESG Freezer Cabinet

**Dashboard > ESG 冷凍櫃**

Device Room Scene

All Device (4) Hub (1) I/O Controller (2) Smart Meter (1)

**Freezer Cabinet Hub**

Status online  
WiFiSSID G403-57F1  
Model SA7586  
Firmware Version 6.0.4  
Firmware Code 47

**Lighting**

use electricity 1.2 kWh  
carbon emission 0.59 KG

Switch1   
Switch2

**Defogging**

use electricity 6.2 kWh  
carbon emission 3.06 KG

Switch1   
Switch2

**Total power consumption**

use electricity 21.95 kWh  
carbon emission 10.84 KG  
Temperature No temperature sensor

Switch

Dashboard: v0.2.0.6.5

# Successful Case-Low Temperature Light



Open Shelf Showcase / USA



Open Shelf Showcase / Taiwan 、  
China 、 Thailand



Vending Machine / Mexico



Walk-in Freezer / Taiwan



Open Shelf Showcase / Taiwan



Walk-in Freezer/USA

# Successful Case-ESG Lighting Fixture



16W/67%/17 ton reduction



16W/47% reduction



23W/77%/28 ton reduction



23W/52%/15 ton reduction



22W/58%/15 ton reduction



22W/45%/862 ton reduction

**THANK  
YOU!**



*Ledtech*